

Corporate Work Study Program



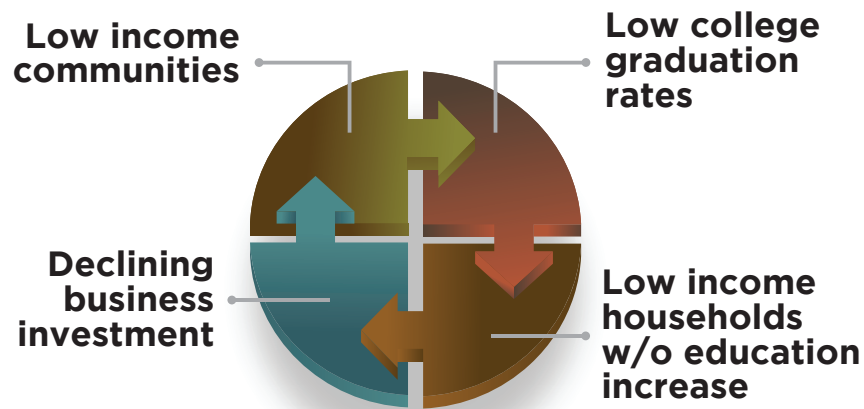
CRISTO REY
ST. MARTIN COLLEGE PREP

A Catch 22 We Can Do Without

NO **COLLEGE**
WITHOUT
HIGHER INCOME

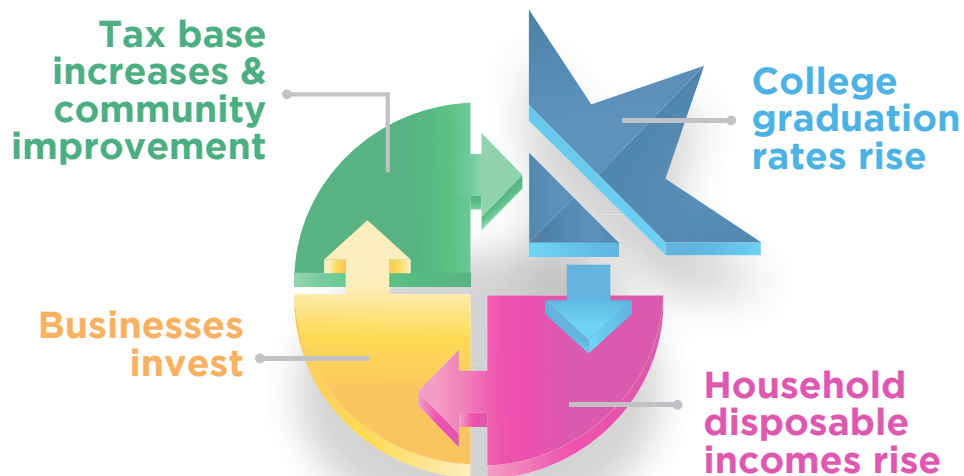
NO **HIGHER INCOME**
WITHOUT
COLLEGE

This self-perpetuating cycle is repeating all too often. Low college enrollment and graduation rates tend to populate communities with a less employable workforce. The result is fewer growth opportunities for all involved.



Interrupting the Cycle

The Cristo Rey model is a powerful idea - it drastically increases the college enrollment and graduation rates of low-income families by offering value to its partner companies. Cristo Rey St. Martin students are learning to be college ready, work ready and career ready.



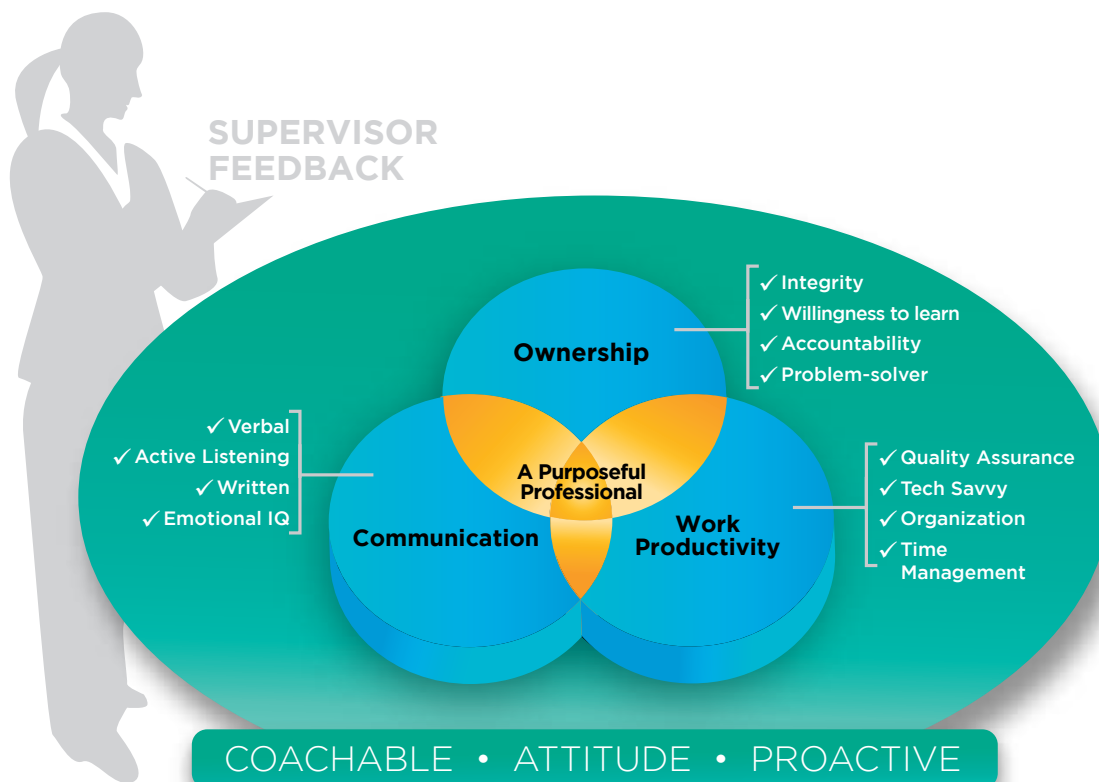
Why Cristo Rey Students Do So Well



Cristo Rey students are highly motivated - each carries a full course load, is dedicated to the work-study program and has a family that is willing to make the necessary sacrifices.

Every Cristo Rey student completes a comprehensive orientation and training program with a clear understanding of the criteria by which they will be evaluated.

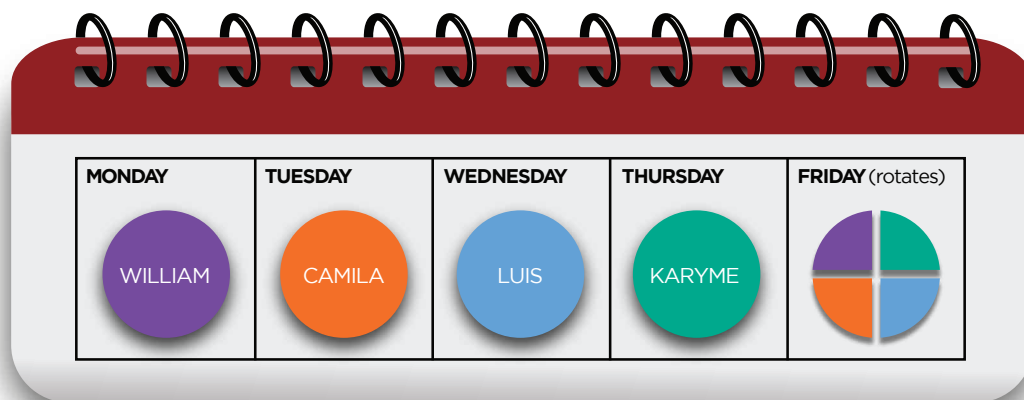
A dynamic feedback loop between Cristo Rey and your supervisors guarantees success and productivity for both the student and the departments for which s/he works.



Our *Purposeful Professional* training and feedback program has been so successful that some of our partner companies are looking to adopt it for their own employees.

How the Program Works

The Corporate Work Study Program is separately incorporated and functions like a temporary employment agency. Since students are employees of the CWSP, Cristo Rey manages all job-related paperwork and employment-related expenditures. Payroll, taxes, workers' comp, liability insurance and benefits are all handled by Cristo Rey St. Martin College Prep.



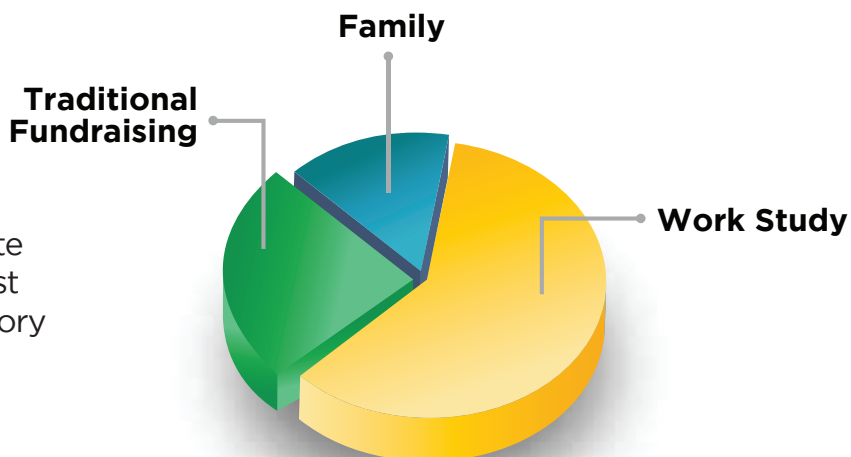
Student workers never miss instructional time. Four student workers share one full-time (Monday thru Friday) position in a rotating schedule. Thus, each student worker works five full days a month.

Cristo Rey transports students to and from work each day. A team of four students covers one full-time position at a partner organization. Their academic schedules are structured to ensure that they never miss a class or a day of work.

Your company will be charged a competitive fee for the services provided. The fee is considered a business expense, not a donation. The funds students earn are applied directly to the cost of their education.

Paying for Tuition

Money earned through the Corporate Work Study Program offsets the cost of tuition making a college preparatory education possible.



The Benefits to Our Business Partners

- A trained, **diverse** and **tech-savvy workforce** at a reduced FTE rate
- Productive student workers, groomed for **possible employment later**
- Access to a national pipeline of **predominantly minority talent** that can be leveraged through the Cristo Rey Network for job postings
- Dovetails with management objectives to engage a **diverse and inclusive workforce**
- Aligns with internal development plans - offering **leadership and mentorship opportunities** to first-time managers
- Naturally lends itself to **corporate reverse mentoring initiative**
- Has a significant and **lasting impact** on your employees, students, families and the community
- Own a **high visibility community outreach** program that is effecting positive change
- Consistent with **corporate social responsibility** efforts - a characteristic attractive to young professionals



**Underwriters
Laboratories**

"I support Cristo Rey because it works. Supervisors report that these students are professional, serious and focused. Not only are we making a huge difference in their lives - but their presence in our workplace is making us better at what we do. The mentorship of these young students is having a remarkable effect on every supervisor and every department in which they are placed."

Terry Brady
President, Underwriters Laboratories



"We have been proud to be part of the Cristo Rey St. Martin Corporate Work Study Program for over 10 years. We have seen many remarkable students during that time, who have consistently exceeded our expectations and made important contributions to our organization. At the same time, this has provided a growth opportunity for our team members as they have a chance to learn and grow as mentors of these young people. This truly is a program that works all the way around — for the students, for us, and for our community."

Chuck Greener
Senior Vice President Global Communications and Corporate Affairs
Walgreens Boots Alliance



"Karyme (CRSM Freshman) started at AbbVie with good verbal and active listening communication skills and continues to develop those skills. She has a willingness to learn and is accountable for her assignments. She is able to problem solve issues that are presented to her. For example, we asked her to solve a challenge with a template to be used over a 12-month period, and her end product exceeded our expectations. She is able to learn new programs and adapt her tasks to incorporate those skills. She completes assignments efficiently and earlier than expected."

Tammy D. Finney
Marketing Operations, AbbVie



"William (CRSM Junior) excels in whatever task he's given. His attitude is top notch. He's professional and friendly to all and looks you in the eye when he's speaking with you. This shows total maturity. He's not afraid to try something new and ensures his work is done well. His attention to detail is spot on. I couldn't be more pleased."

Liz Peters
Executive Assistant, AON



"Camila (CRSM Freshman) is very tech savvy and handles reporting very well. She has not backed down from difficult excel functions and utilizing online Business Intelligence reports from SAP. Her coach-ability is also a key strength. She has no problem receiving feedback on how she could do a report differently or improve and shows immediate response to implement. Well done Camila!"

Keith Fisher
Production & Distribution Planning, Barilla America, Inc.

To discuss a Work Study Partnership contact:

Kristen Watson, Director of Development 224.219.9712 kristenwatson@cristoreystmartin.org
3106 BELVEDERE RD WAUKEGAN, ILLINOIS 60085 CRISTOREYSTMARTIN.ORG